

KOMATSU

PC290LC-11 PC290NLC-11



Hydraulic excavator

Engine power
159 kW / 213 HP @ 2050 rpm

Operating weight
PC290LC-11: 29950 - 32280 kg
PC290NLC-11: 29850 - 32180 kg

Bucket capacity
max. 2.02 m³

PC290LC/NLC-11



Engine power
159 kW / 213 HP @ 2050 rpm

Operating weight
PC290LC-11: 29950 - 32280 kg
PC290NLC-11: 29850 - 32180 kg

Bucket capacity
max. 2.02 m³

Exceptional workability and environmental performance

Powerful and environmentally friendly

- EU Stage V engine
- Adjustable idle shutdown
- Komatsu fuel-saving technology

First-class comfort

- Fully air-suspended operator station
- Low-noise design
- Widescreen monitor

Maximised efficiency

- Increased productivity
- Built-in versatility and superior productivity
- Enhanced engine management
- Improved hydraulic efficiency
- Komatsu Integrated Attachment Control (KIAC)

Safety first

- Komatsu SpaceCab™
- KomVision surround view system
- Neutral position detection system

Quality you can rely on

- Komatsu-quality components
- Extensive dealer support network

Komtrax

- Komatsu Wireless Monitoring System
- 4G mobile communications
- Integrated communication antenna
- Increased operational data and reports



A maintenance program
for Komatsu customers



Higher productivity

The PC290LC/NLC-11 is quick and precise. It features a powerful Komatsu EU Stage V engine, Komatsu's Closed Center Load Sensing (CLSS) hydraulic system and first-class Komatsu comfort to provide a fast response and unrivalled productivity for its class.

Komatsu fuel-saving technology

Fuel consumption on the PC290LC/NLC-11 is lower by up to 5%. Engine management is enhanced. The variable speed matching of the engine and hydraulic pump and a viscous fan clutch guarantee efficiency and precision during single and combined movements.

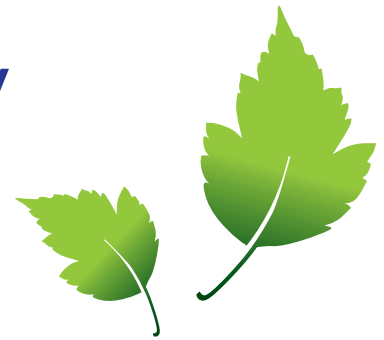
Adjustable idle shutdown

The Komatsu auto idle shutdown automatically turns off the engine after it idles for a set period of time. This feature can easily be programmed from 5 to 60 minutes, to reduce unnecessary fuel consumption and exhaust emissions, and to lower operating costs. An Eco-gauge and the Eco guidance tips on the cab monitor further encourage efficient operations.

Powerful and environmentally friendly

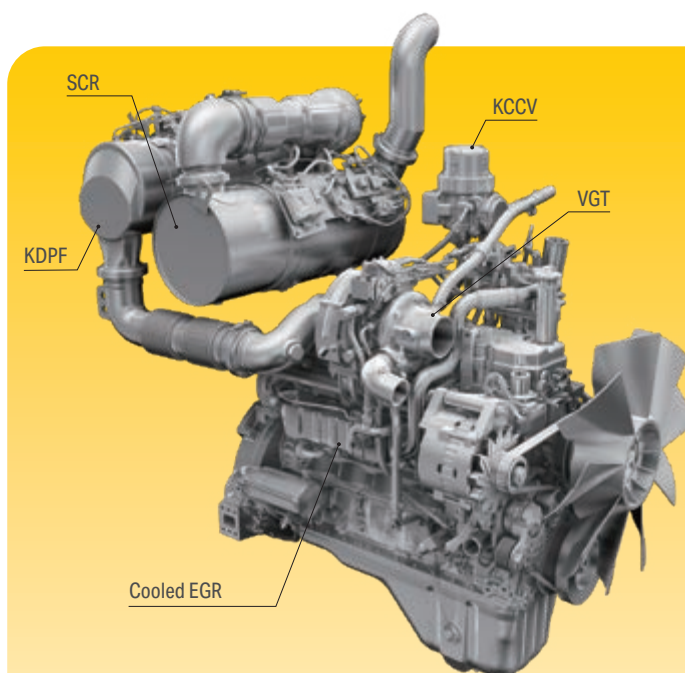
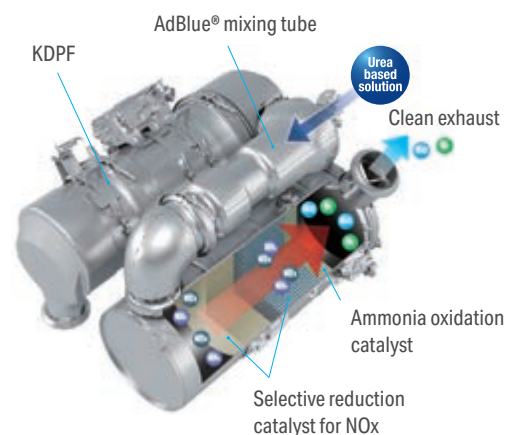
Komatsu EU Stage V

The Komatsu EU Stage V engine is productive, dependable and efficient. With ultra-low emissions, it provides a lower environmental impact and a superior performance to help reduce operating costs and lets the operator work in complete peace of mind.



Heavy-duty aftertreatment

The aftertreatment system combines a Komatsu Diesel Particulate Filter (KDPF) and Selective Catalytic Reduction (SCR). The SCR injects the correct amount of AdBlue® into the system at the proper rate to break down NOx into water (H₂O) and non-toxic nitrogen gas (N₂). NOx emissions are reduced by 80% vs. EU Stage IIIB engines.



High-Pressure Common Rail (HPCR)

To achieve complete fuel burn and lower exhaust emissions, the heavy-duty High-Pressure Common Rail fuel injection system is computer controlled to deliver a precise quantity of pressurised fuel into the redesigned engine combustion chamber by multiple injections.

Exhaust Gas Recirculation (EGR)

Cooled EGR is a technology well-proven in current Komatsu engines. The increased capacity of the EGR cooler now ensures very low NOx emissions and a better engine performance.

Komatsu Closed Crankcase Ventilation (KCCV)

Crankcase emissions (blow-by gas) are passed through a CCV filter. The oil mist trapped in the filter is returned back to the crankcase while the filtered gas is returned to the air intake.

Variable Geometry Turbo (VGT)

The VGT provides optimal airflow to the engine combustion chamber under all speed and load conditions. Exhaust gas is cleaner, fuel economy is improved while machine power and performance are maintained.

PC290LC/NLC-11

A wide choice of options

Two optional attachment lines are available and 15 attachment memory settings are simply customised. Combined with a standard-fit hydraulic quick coupler power circuit, it's easier than ever to switch working styles. With a choice of arms and undercarriages, you can configure the PC290LC/NLC-11 to match specific demands for transport, working envelope or duty.

6 working modes

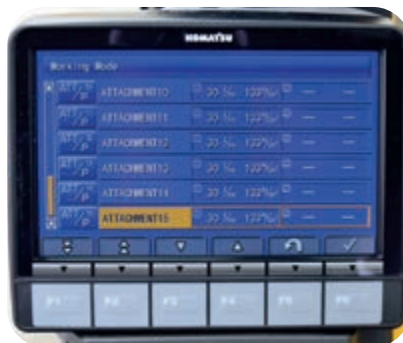
The PC290LC/NLC-11 delivers the power required with the lowest fuel usage. 6 working modes are available: Power, Lifting/Fine Operation, Breaker, Economy, Attachment Power and Attachment Economy. The operator can ideally balance the Economy mode between power and economy to match the work at hand. The oil flow delivered to hydraulic attachments is also adjustable directly on the class-leading widescreen monitor panel.



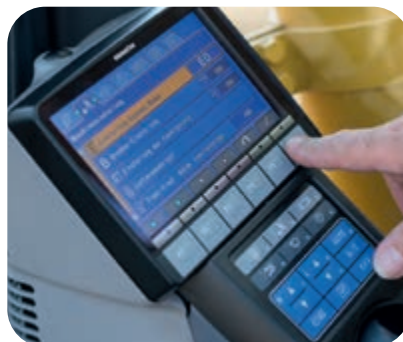
Choice of four arm lengths
Mono boom or two-piece boom



Two optional hydraulic lines to mount
a variety of attachments



Komatsu Integrated Attachment Control (KIAC)
for up to 15 tool presets for oil flow and pressure



Versatility at your fingertips: select the perfect
setting for each job



Maximised efficiency

Built-in versatility

Powerful and precise, the Komatsu PC290LC/NLC-11 is equipped to efficiently carry out any task your business requires. On all jobsites, big or small, for digging, trenching, landscaping or site preparation, the Komatsu hydraulic system always provides maximum productivity and control.



First-class comfort

Increased comfort

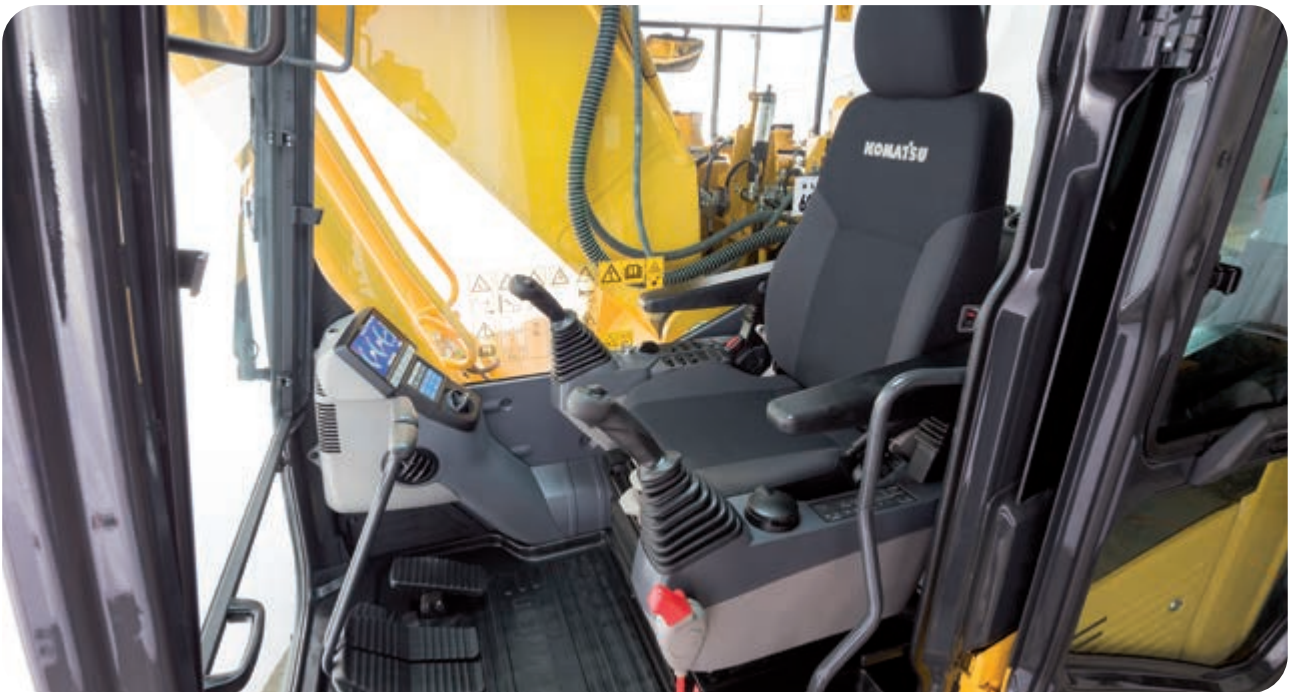
In the wide Komatsu SpaceCab™, a standard air-suspended high-back seat, heated for improved comfort and with fully adjustable armrests, is the centre of a comfortable and low-fatigue working environment. High visibility and ergonomic controls further assist to maximise the operator's productivity.

Perfect operator convenience

In addition to the standard radio, the PC290LC/NLC-11 has an auxiliary input for connecting external devices and play music through the cab speakers. Two 12-volt power ports are also incorporated in the cab. Proportional controls are fitted as standard for safe and precise operation of attachments.

Low-noise design

Komatsu crawler excavators have very low external noise levels and are especially well-suited for work in confined spaces or urban areas. The optimal usage of sound insulation and of sound absorbing materials helps to make noise levels inside the cab comparable to those of an executive car.



Convenient, ergonomic and precise control: joysticks with proportional control button for attachments



Plenty of storage room, a hot and cool box, a magazine box and a cup holder



Armrest with simple height adjustment



Safety first

Optimal jobsite safety

Safety features on the Komatsu PC290LC/NLC-11 comply with the latest industry standards and work in synergy to minimise risks to people in and around the machine. A neutral detection system for travel and work equipment levers increase jobsite safety, along with a seat belt caution indicator and an audible travel alarm. Highly durable anti-slip plates – with additional high friction covering – maintain long term traction performance.



Safe maintenance

Thermal guards around high temperature areas of the engine, protected fan belt and pulleys, a pump/engine partition that prevents hydraulic oil from spraying onto the engine, a wide catwalk and exceptionally sturdy handrails: in Komatsu tradition, the highest safety level is provided for a fast and smooth maintenance.



Komatsu SpaceCab™

The ROPS cab has a tubular steel frame and provides high shock absorbency, impact resistance and durability. The seat belt is well designed to keep the operator in the safety zone of the cab in the event of a rollover. Optionally the cab can be fitted with a Falling Object Protective System (FOPS) with openable front guard.



KomVision

KomVision machine visibility gives the operator a constant clear view of the safety zone around the machine. This allows the operator to focus on the work at hand even in low light conditions.



An evolutionary interface

Helpful information is now easier than ever to find and understand with the upgraded monitor interface. An optimal main screen for the ongoing work can be selected simply by pressing the F3 key.

Lower operating costs

Komatsu ICT contributes to the reduction of operating costs by assisting to comfortably and efficiently manage operations. It raises the level of customer satisfaction and the competitive edge of our products.

Widescreen monitor

Conveniently customisable and with a choice of 26 languages, the widescreen monitor with simple switches and multifunction keys gives fingertip access to a large range of functions and operating info. The rear camera view and an AdBlue® level gauge are now incorporated into the default main screen.



Quick view on the operation logs



With KomVision, various camera view options are available whilst maintaining constant "birdview" from above the machine



Operator identification function

Information & communication technology



Knowledge

You get quick answers to basic and critical questions about your machines – what they're doing, when they did it, where they're located, how they can be used more efficiently and when they need to be serviced. Performance data is relayed by wireless communication technology (satellite, GPRS or 4G depending on model) from the machine to a computer and to the local Komatsu distributor – who's readily available for expert analysis and feedback.

Convenience

Komtrax enables convenient fleet management on the web, wherever you are. Data is analysed and packaged specifically for effortless and intuitive viewing in maps, lists, graphs and charts. You can foresee eventual maintenance issues and required spare parts, and troubleshoot a problem before Komatsu technicians arrive on site.



The way to higher productivity

Komtrax uses the latest wireless monitoring technology. Compatible on PC, smartphone or tablet, it delivers insightful and cost saving information about your fleet and equipment, and offers a wealth of information to facilitate peak machine performance. By creating a tightly integrated web of support it allows proactive and preventive maintenance and helps to efficiently run a business.

Power

The detailed information that Komtrax puts at your fingertips 24 hours a day, 7 days a week gives the power to make better daily and long-term strategic decisions – at no extra cost. Problems can be anticipated, maintenance schedules customised, downtime minimised and machines kept where they belong: working on the jobsite.



Easy maintenance



Central service points

Komatsu designed the PC290LC/NLC-11 with centralised and conveniently located service points to make necessary inspections and maintenance quick and easy.

Komatsu Care

Komatsu Care is a maintenance program that comes as standard with your new Komatsu machine. It covers factory-scheduled maintenance, performed with Komatsu Genuine parts by Komatsu-trained technicians. Depending on your machine's engine, it also offers extended coverage of the Komatsu Diesel Particulate Filter (KDPF) and of the Selective Catalytic Reduction (SCR). Please contact your local Komatsu distributor for terms and conditions.

Long-life oil filters

The Komatsu Genuine hydraulic oil filter uses high-performance filtering material for long replacement intervals, which significantly reduces maintenance costs.

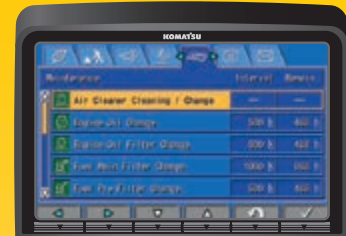


AdBlue® tank

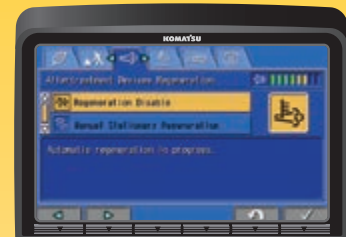
For simple access, the AdBlue® tank is installed on the front stairway.

Flexible warranty

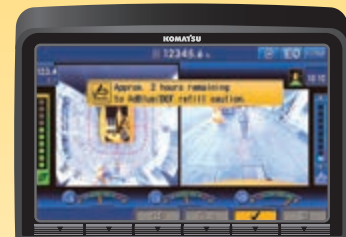
When you purchase Komatsu equipment, you gain access to a broad range of programmes and services that have been designed to help you get the most from your investment. For example, Komatsu's Flexible Warranty Programme provides a range of extended warranty options on the machine and its components. These can be chosen to meet your individual needs and activities. This programme is designed to help reduce total operating costs.



Basic maintenance screen



Aftertreatment device regeneration screen for the KDPF



AdBlue® level and refill guidance



Quality you can rely on

Komatsu-quality

With the latest computer techniques and a thorough test programme, Komatsu produces equipment to meet your highest standards. All major components of the PC290LC/NLC-11 are designed and directly manufactured by Komatsu, and essential machine functions are perfectly matched for a highly reliable and productive excavator.

Rugged design

Maximum toughness and durability are the cornerstones of Komatsu's philosophy – along with safety and top class customer service. Single piece plates and castings are used in key areas of the machine's structure for good load distribution. Highly durable rubbing strips on the underside of the arm protect the structure against impact damage.

Extensive support network

The extensive Komatsu distribution and dealer network is standing by to help keep your fleet in optimum condition. Customised servicing packages are available, with express availability of spare parts, to make sure that your Komatsu equipment continues to perform at its peak.



Durable and reliable undercarriage design for maximum protection



Cast boom foot and single piece boom plates

Specifications

Engine

Model	Komatsu SAA6D107E-3
Type	Common rail direct injection, water-cooled, emissionised, turbocharged, after-cooled diesel
Engine power	
at rated engine speed	2050 rpm
ISO 14396	159 kW / 213 HP
ISO 9249 (net engine power)	147 kW / 196 HP
No. of cylinders	6
Bore × stroke	107 × 124 mm
Displacement	6.69 l
Air filter type	Double element type with monitor panel dust indicator and auto dust evacuator
Cooling	Suction type cooling fan with radiator fly screen
Fuel	Diesel fuel, conforming to EN590 Class 2/Grade D. Paraffinic fuel capability (HVO, GTL, BTL), conforming to EN 15940:2016

Hydraulic system

Type	HydrauMind. Closed-centre system with load sensing and pressure compensation valves
Additional circuits	2 additional circuits with proportional control can be installed
Main pump	2 variable displacement piston pumps supplying boom, arm, bucket, swing and travel circuits
Maximum pump flow	2 × 239.5 l/min
Relief valve settings	
Implement	380 kg/cm ²
Travel	380 kg/cm ²
Swing	295 kg/cm ²
Pilot circuit	33 kg/cm ²

Service refill capacities

Fuel tank	400 l
Radiator	36.0 l
Engine oil	23.1 l
Swing drive	7.2 l
Hydraulic tank	132 l
Final drive (each side)	8.0 l
AdBlue® tank	23.1 l

Swing system

Type	Axial piston motor driving through planetary double reduction gearbox
Swing lock	Electrically actuated wet multidisc brake integrated into swing motor
Swing speed	0 - 10.5 rpm
Swing torque	87 kNm

Drives and brakes

Steering control	2 levers with pedals giving full independent control of each track
Drive method	Hydrostatic
Travel operation	Automatic 3-speed selection
Gradeability	70%, 35°
Max. travel speeds	
Lo / Mi / Hi	3.0 / 4.1 / 5.5 km/h
Maximum drawbar pull	25400 kg
Brake system	Hydraulically operated discs in each travel motor

Undercarriage

Construction	X-frame centre section with box section track frames
Track assembly	
Type	Fully sealed
Shoes (each side)	48
Tension	Combined spring and hydraulic unit
Rollers	
Track rollers (each side)	8
Carrier rollers (each side)	2

Environment

Engine emissions	Fully complies with EU Stage V exhaust emission regulations
Noise levels	
LwA external	104 dB(A) (2000/14/EC Stage II)
LpA operator ear	70 dB(A) (ISO 6396 dynamic test)
Vibration levels (EN 12096:1997)	
Hand/arm	≤ 2.5 m/s ² (uncertainty K = 0.37 m/s ²)
Body	≤ 0.5 m/s ² (uncertainty K = 0.17 m/s ²)
Contains fluorinated greenhouse gas HFC-134a (GWP 1430). Quantity of gas 0.9 kg, CO ₂ equivalent 1.29 t	

Operating weight (appr.) – Mono boom

Triple grouser shoes	PC290LC-11		PC290NLC-11	
	Operating weight	Ground pressure	Operating weight	Ground pressure
600 mm	29950 kg	0.57 kg/cm ²	29850 kg	0.57 kg/cm ²
700 mm	30350 kg	0.49 kg/cm ²	30250 kg	0.49 kg/cm ²
800 mm	30750 kg	0.44 kg/cm ²	30650 kg	0.44 kg/cm ²
850 mm	30950 kg	0.41 kg/cm ²	30850 kg	0.41 kg/cm ²

Operating weight, including specified work equipment, 3.2 m arm, 830 kg bucket, operator, lubricant, coolant, full fuel tank and the standard equipment.

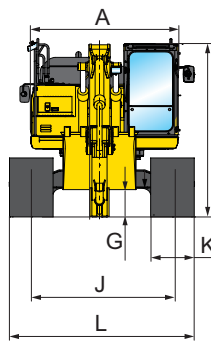
Operating weight (appr.) – Two-piece boom

Triple grouser shoes	PC290LC-11		PC290NLC-11	
	Operating weight	Ground pressure	Operating weight	Ground pressure
600 mm	31280 kg	0.59 kg/cm ²	31180 kg	0.59 kg/cm ²
700 mm	31680 kg	0.51 kg/cm ²	31580 kg	0.51 kg/cm ²
800 mm	32080 kg	0.46 kg/cm ²	31980 kg	0.45 kg/cm ²
850 mm	32280 kg	0.43 kg/cm ²	32180 kg	0.43 kg/cm ²

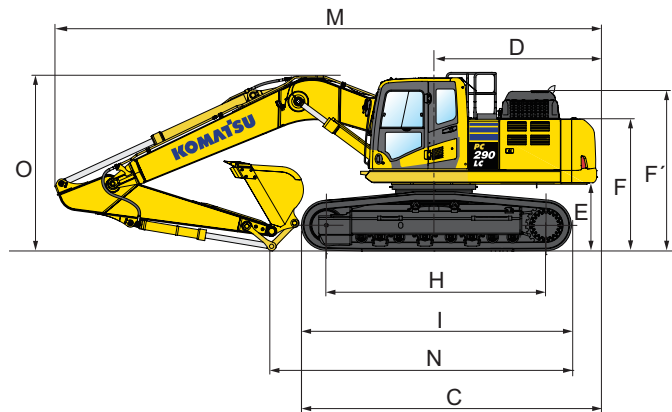
Operating weight, including specified work equipment, 3.2 m arm, 830 kg bucket, operator, lubricant, coolant, full fuel tank and the standard equipment.

Dimensions and performance figures

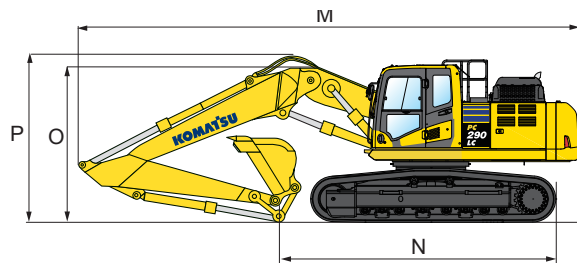
Machine dimensions	PC290LC-11	PC290NLC-11
A Overall width of upper structure	2705 mm	2705 mm
B Overall height of cab	3180 mm	3180 mm
C Overall length of basic machine	5460 mm	5460 mm
D Tail length	2985 mm	2985 mm
Tail swing radius	3020 mm	3020 mm
E Clearance under counterweight	1215 mm	1215 mm
F Machine tail height	2380 mm	2380 mm
F' Machine tail height (top of engine cover)	2895 mm	2895 mm
G Ground clearance	495 mm	495 mm
H Tumbler centre distance	4030 mm	4030 mm
I Track length	4955 mm	4955 mm
J Track gauge	2590 mm	2390 mm
K Track shoe width	600, 700, 800, 850 mm	600, 700, 800, 850 mm
L Overall track width with 600 mm shoes	3190 mm	2990 mm
Overall track width with 700 mm shoes	3290 mm	3090 mm
Overall track width with 800 mm shoes	3390 mm	3190 mm
Overall track width with 850 mm shoes	3440 mm	3240 mm



Mono boom



Two-piece boom



Transport dimensions	Mono boom				Two-piece boom		
Arm length	2.0 m	2.65 m	3.2 m	3.5 m	2.65 m	3.2 m	3.5 m
M Transport length	10160 mm	10320 mm	10265 mm	10275 mm	10140 mm	10110 mm	10050 mm
N Length on ground (transport)	6615 mm	6425 mm	5625 mm	5350 mm	6825 mm	6155 mm	5765 mm
O Overall height (to top of boom)	3160 mm	3425 mm	3340 mm	3375 mm	3180 mm	3210 mm	3230 mm
P Overall height (to top of hose)	-	-	-	-	3565 mm	3620 mm	3730 mm

PC290LC-11 / Max. bucket capacity and weight

Arm length	Mono boom			
	2.0 m	2.65 m	3.2 m	3.5 m
Material weight up to 1.2 t/m ³	2.02 m ³ 1400 kg	2.02 m ³ 1400 kg	2.02 m ³ 1400 kg	2.02 m ³ 1400 kg
Material weight up to 1.5 t/m ³	2.02 m ³ 1400 kg	1.98 m ³ 1375 kg	1.78 m ³ 1300 kg	1.72 m ³ 1275 kg
Material weight up to 1.8 t/m ³	1.93 m ³ 1350 kg	1.71 m ³ 1275 kg	1.50 m ³ 1200 kg	1.49 m ³ 1175 kg

PC290NLC-11 / Max. bucket capacity and weight

Arm length	Mono boom			
	2.0 m	2.65 m	3.2 m	3.5 m
Material weight up to 1.2 t/m ³	2.02 m ³ 1400 kg	2.02 m ³ 1400 kg	1.88 m ³ 1350 kg	1.82 m ³ 1300 kg
Material weight up to 1.5 t/m ³	2.02 m ³ 1400 kg	1.77 m ³ 1300 kg	1.59 m ³ 1200 kg	1.54 m ³ 1200 kg
Material weight up to 1.8 t/m ³	1.73 m ³ 1275 kg	1.53 m ³ 1175 kg	1.30 m ³ 1125 kg	1.33 m ³ 1100 kg

PC290LC-11 / Max. bucket capacity and weight

Arm length	Two-piece boom		
	2.65 m	3.2 m	3.5 m
Material weight up to 1.2 t/m ³	2.02 m ³ 1400 kg	2.02 m ³ 1400 kg	1.99 m ³ 1400 kg
Material weight up to 1.5 t/m ³	1.95 m ³ 1375 kg	1.75 m ³ 1275 kg	1.68 m ³ 1250 kg
Material weight up to 1.8 t/m ³	1.69 m ³ 1250 kg	1.52 m ³ 1175 kg	1.46 m ³ 1150 kg

PC290NLC-11 / Max. bucket capacity and weight

Arm length	Two-piece boom		
	2.65 m	3.2 m	3.5 m
Material weight up to 1.2 t/m ³	2.02 m ³ 1400 kg	1.85 m ³ 1325 kg	1.78 m ³ 1300 kg
Material weight up to 1.5 t/m ³	1.74 m ³ 1275 kg	1.56 m ³ 1200 kg	1.50 m ³ 1175 kg
Material weight up to 1.8 t/m ³	1.51 m ³ 1175 kg	1.35 m ³ 1100 kg	1.30 m ³ 1075 kg

Max. capacity and weight have been calculated according to ISO 10567:2007.

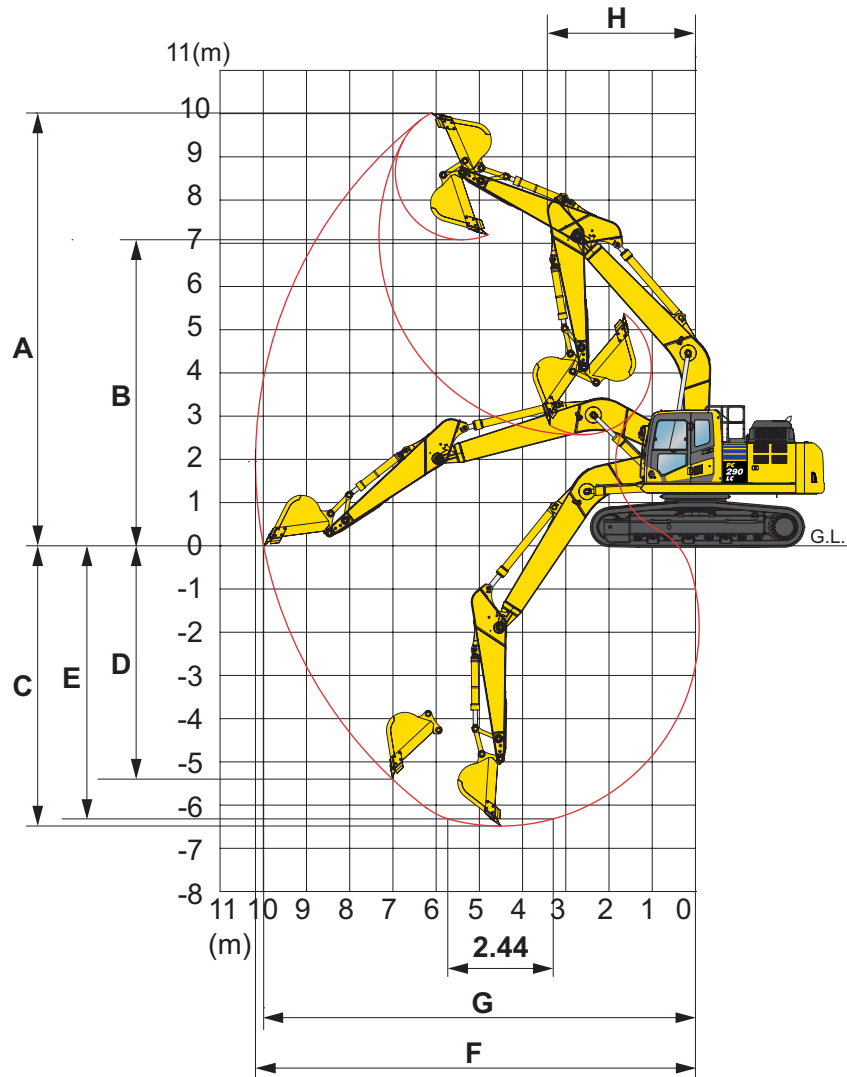
Please consult with your distributor for the correct selection of buckets and attachments to suit the application.

Bucket and arm force

Arm length	2.0 m	2.65 m	3.2 m	3.5 m
Bucket digging force	21600 kg	21600 kg	18800 kg	18800 kg
Bucket digging force at PowerMax	23100 kg	23100 kg	20200 kg	20200 kg
Arm crowd force	17600 kg	15280 kg	13420 kg	12000 kg
Arm crowd force at PowerMax	18800 kg	16320 kg	14370 kg	12800 kg

Working range

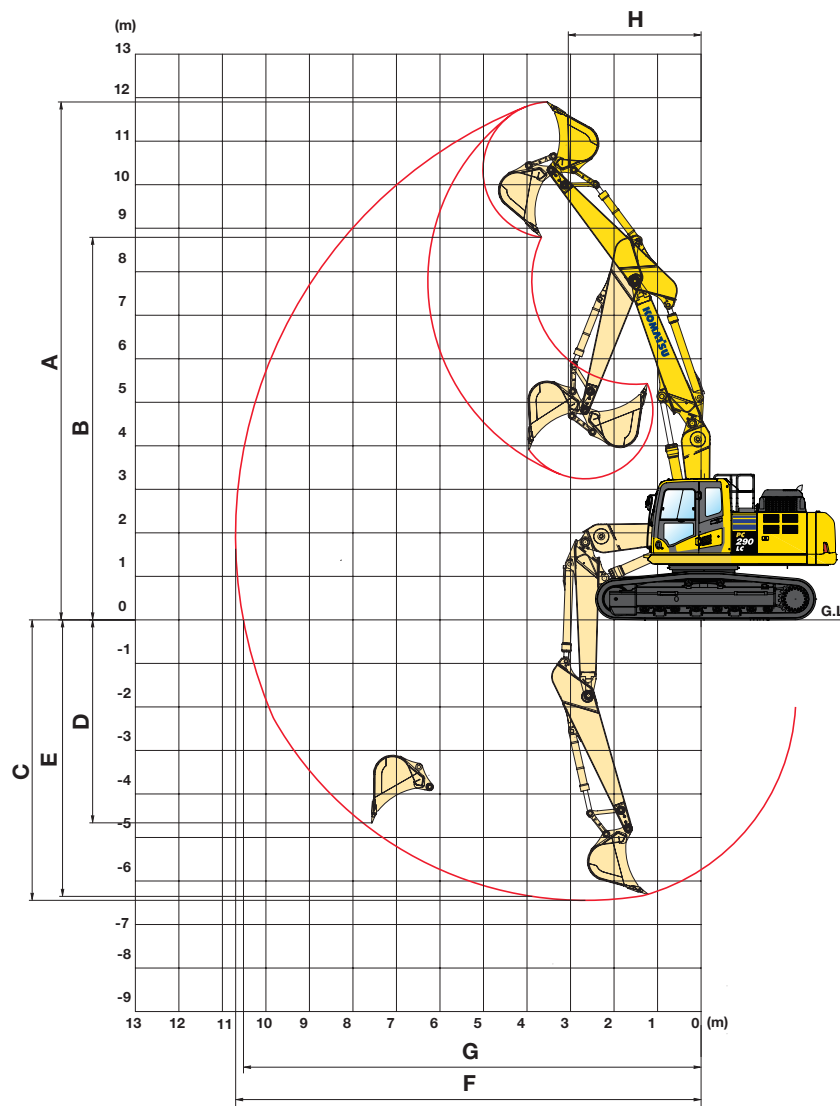
Mono boom



Working range

Arm length	2.0 m	2.65 m	3.2 m	3.5 m
A Max. digging height	9780 mm	9985 mm	10345 mm	10355 mm
B Max. dumping height	6830 mm	7040 mm	7370 mm	7435 mm
C Max. digging depth	5720 mm	6360 mm	6915 mm	7220 mm
D Max. vertical wall digging depth	3910 mm	5365 mm	6135 mm	5110 mm
E Max. digging depth of cut for 2.44 m level	5500 mm	6175 mm	6755 mm	7070 mm
F Max. digging reach	9570 mm	10095 mm	10635 mm	10890 mm
G Max. digging reach at ground level	9370 mm	9905 mm	10455 mm	10715 mm
H Min. swing radius	3620 mm	3740 mm	3680 mm	3740 mm

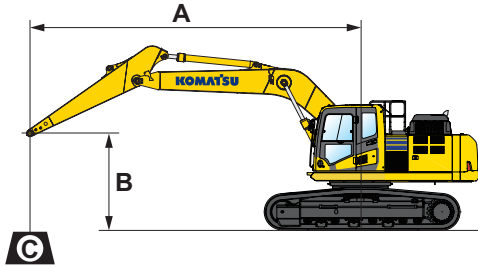
Two-piece boom



Working range

Arm length	2.0 m	2.65 m	3.2 m	3.5 m
A Max. digging height	10960 mm	11295 mm	11880 mm	12065 mm
B Max. dumping height	7870 mm	8315 mm	8785 mm	8985 mm
C Max. digging depth	5255 mm	5870 mm	6430 mm	6715 mm
D Max. vertical wall digging depth	4110 mm	4535 mm	5250 mm	5440 mm
E Max. digging depth of cut for 2.44 m level	5150 mm	5775 mm	6340 mm	6630 mm
F Max. digging reach	9545 mm	10120 mm	10675 mm	10945 mm
G Max. digging reach at ground level	9345 mm	9935 mm	10495 mm	10770 mm
H Min. swing radius	2680 mm	3190 mm	3055 mm	3110 mm

Lifting capacity



A – Reach from swing center

B – Bucket hook height

C – Lifting capacities

– Rating over front

– Rating over side

– Rating at maximum reach

Weights:

With 2.0 and 2.65 m arm: bucket linkage and bucket cylinder: 390 kg

With 3.2 and 3.5 m arm: bucket linkage and bucket cylinder: 363 kg

PC290LC-11 Mono boom

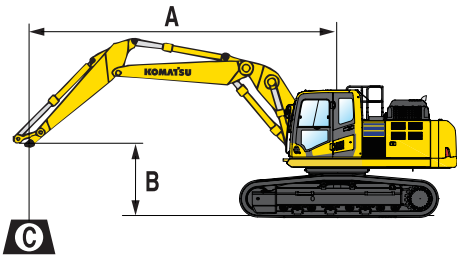
With 700 mm shoes

Arm length	A				7.5 m		6.0 m		4.5 m		3.0 m		1.5 m	
	B													
 3.5 m	6.0 m	kg	*4180	*4180	*6650	6140								
	4.5 m	kg	*4190	*4190	*7390	6000	*8060	*8060						
	3.0 m	kg	*4330	4270	*8090	5810	*9410	7970	*12090	*12090				
	1.5 m	kg	*4610	4160	8480	5610	*10730	7600	*14580	11320				
	0.0 m	kg	*5080	4220	8310	5450	11510	7320	*15940	10880	*7970	*7970		
	-1.5 m	kg	*5880	4480	8210	5360	11350	7180	*16180	10720	*12210	*12210	*8090	*8090
	-3.0 m	kg	*7340	5050	8220	5370	11330	7160	*15440	10740	*17810	*17810	*12640	*12640
-4.5 m	kg	*8710	6340			*10170	7300							
 3.2 m	6.0 m	kg	*4550	*4550	*6830	6080	*7430	*7430						
	4.5 m	kg	*4550	*4550	*7660	5960	*8420	8280	*9920	*9920				
	3.0 m	kg	*4700	4420	*8310	5780	*9740	7910	*12680	11950				
	1.5 m	kg	*5000	4310	8460	5590	*10990	7560	*15010	11230				
	0.0 m	kg	*5530	4380	8300	5450	11500	7310	*16130	10860				
	-1.5 m	kg	*6430	4680	8230	5380	11360	7200	*16140	10750	*12270	*12270		
	-3.0 m	kg	8130	5340	8270	5420	11370	7210	*15180	10810	*18780	*18780		
-4.5 m	kg	*8810	6860			*9630	7380							
 2.65 m	6.0 m	kg	*6710	5970	*6760	5970	*8130	*8130						
	4.5 m	kg	*6740	5200	*8160	5900	*9070	8170	*11010	*11010				
	3.0 m	kg	*7020	4820	8610	5740	*10310	7820	*13720	11700				
	1.5 m	kg	7020	4690	8440	5580	*11420	7500	*15700	11090				
	0.0 m	kg	7210	4790	8310	5460	11480	7300	*16310	10840				
	-1.5 m	kg	7840	5170	8280	5430	11400	7230	*15900	10810	*12990	*12990		
	-3.0 m	kg	*9240	6060			*11110	7290	*14550	10920	*19420	*19420		
-4.5 m	kg													
 2.0 m	6.0 m	kg	*7550	6720			*8980	8330	*10070	*10070				
	4.5 m	kg	*7520	5740	8720	5840	*9820	8080	*12300	12270				
	3.0 m	kg	*7810	5290	8590	5730	*10960	7770	*14990	11470				
	1.5 m	kg	7720	5150	8460	5600	11690	7500						
	0.0 m	kg	7990	5300	8380	5530	11530	7360	*16290	10930				
	-1.5 m	kg	8850	5820			11510	7350	*15430	10980	*12500	*12500		
	-3.0 m	kg	*9650	7070			*10320	7480						
-4.5 m	kg													

* Load is limited by hydraulic capacity rather than tipping. Ratings are based on SAE Standard No. J1097.

Rated loads do not exceed 87% of hydraulic lift capacity or 75% of tipping load. Lifting capacity stated is based on lifting with bare arm.

When lifting with additional equipment installed to the arm, please subtract the weight of all additional equipment from the values stated.



A – Reach from swing center

B – Bucket hook height

C – Lifting capacities

– Rating over front

– Rating over side

– Rating at maximum reach

Weights:

With 2.0 and 2.65 m arm:
bucket linkage and
bucket cylinder: 390 kg
With 3.2 and 3.5 m arm:
bucket linkage and
bucket cylinder: 363 kg

PC290LC-11 Two-piece boom

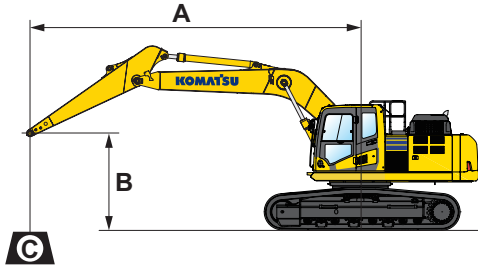
With 600 mm shoes

Arm length	A				9.0 m		7.5 m		6.0 m		4.5 m		3.0 m	
	B													
 3.5 m	7.5 m	kg	*4350	*4350			*4650	*4650	*7000	*7000				
	6.0 m	kg	*4100	*4100			*6850	6050	*7400	*7400				
	4.5 m	kg	*4000	*4000	*3300	*4300	*7950	5950	*8750	8300	*9000	*9000		
	3.0 m	kg	*4050	*4050	*4700	4400	*8600	5750	*10250	7900	*13300	11250		
	1.5 m	kg	*4250	4100	5000	4300	8400	5550	*11200	7550	*14500	11150		
	0.0 m	kg	*4550	4150	*4850	4250	8150	5400	11550	7250	*15450	10800		
	-1.5 m	kg	*5100	4450			7950	5350	11100	7150	*14400	9700		
	-3.0 m	kg							*10350	7200				
 3.2 m	7.5 m	kg	*4750	*4750					*7550	*7550				
	6.0 m	kg	*4450	*4450			*7100	6000	*8100	*8100	*7650	*7650		
	4.5 m	kg	*4350	*4350			*8350	5900	*9500	8250	*10650	*10650		
	3.0 m	kg	*4400	4300	*3850	4350	8600	5700	*10550	7850	*13750	11100		
	1.5 m	kg	*4550	4250	*4450	4300	8350	5550	*11400	7500	*14800	11050		
	0.0 m	kg	*4950	4350			8150	5400	11500	7250	*15550	10800		
	-1.5 m	kg	*5550	4650			7950	5350	11100	7150	*13700	9750		
	-3.0 m	kg												
 2.65 m	7.5 m	kg	*7150	*7150					*9250	8450	*9800	*9150		
	6.0 m	kg	*6650	5850			*7050	5900	*9350	8400	*10200	*9500		
	4.5 m	kg	*6500	5100			8800	5850	*10050	8150	*12450	*11600		
	3.0 m	kg	*6650	4750			8600	5700	*11000	7550	*14600	11600		
	1.5 m	kg	*6950	4650			8500	5550	11700	7450				
	0.0 m	kg	7250	4750			8450	5450	11550	7300	*15450	10850		
	-1.5 m	kg					8650	5450	*11100	7250	*13700	9800		
	-3.0 m	kg												
 2.0 m	7.5 m	kg	*8200	*8200							*11100	*10300		
	6.0 m	kg	*7450	6650					*10050	8250	*11750	*10950		
	4.5 m	kg	*7200	5650			*8550	5750	*10650	8000	*13500	11400		
	3.0 m	kg	*7300	5250			8600	5650	*11500	7700				
	1.5 m	kg	*7650	5100			8450	5550	11650	7450				
	0.0 m	kg	8050	5300			8400	5500	11600	7350	*15050	10900		
	-1.5 m	kg							*10600	7350				
	-3.0 m	kg												

* Load is limited by hydraulic capacity rather than tipping. Ratings are based on SAE Standard No. J1097.

Rated loads do not exceed 87% of hydraulic lift capacity or 75% of tipping load. Lifting capacity stated is based on lifting with bare arm. When lifting with additional equipment installed to the arm, please subtract the weight of all additional equipment from the values stated.

Lifting capacity



A – Reach from swing center

B – Bucket hook height

C – Lifting capacities

– Rating over front

– Rating over side

– Rating at maximum reach

Weights:

With 2.0 and 2.65 m arm: bucket linkage and bucket cylinder: 390 kg

With 3.2 and 3.5 m arm: bucket linkage and bucket cylinder: 363 kg

PC290NLC-11 Mono boom

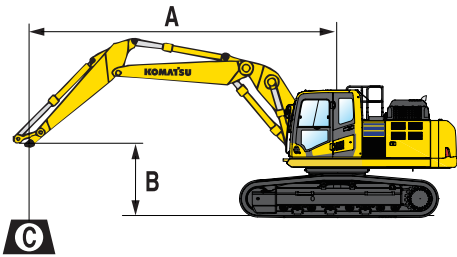
With 600 mm shoes

Arm length	A				7.5 m		6.0 m		4.5 m		3.0 m		1.5 m	
	B													
 3.5 m	6.0 m	kg	*4180	*4180	*6650	5610								
	4.5 m	kg	*4190	4150	*7390	5480	*8060	7610						
	3.0 m	kg	*4330	3880	*8090	5290	*9410	7240	*12090	10880				
	1.5 m	kg	*4610	3770	8350	5090	*10730	6870	*14580	10130				
	0.0 m	kg	*5080	3820	8170	4930	11320	6600	*15940	9710	*7970	*7970		
	-1.5 m	kg	*5880	4050	8070	4850	11160	6460	*16180	9550	*12210	*12210	*8090	*8090
	-3.0 m	kg	*7340	4570	8090	4860	11140	6450	*15440	9570	*17810	*17810	*12640	*12640
	-4.5 m	kg	*8710	5730			*10170	6570						
 3.2 m	6.0 m	kg	*4550	*4550	*6830	5550	*7430	*7430						
	4.5 m	kg	*4550	4310	*7660	5430	*8420	7540	*9920	*9920				
	3.0 m	kg	*4700	4020	*8310	5260	*9740	7180	*12680	10740				
	1.5 m	kg	*5000	3910	8320	5070	*10990	6830	*15010	10050				
	0.0 m	kg	*5530	3970	8170	4930	11310	6590	*16130	9690				
	-1.5 m	kg	*6430	4230	8090	4870	11180	6480	*16140	9580	*12270	*12270		
	-3.0 m	kg	8000	4830	8130	4900	11190	6490	*15180	9640	*18780	18540		
	-4.5 m	kg	*8810	6200			*9630	6650						
 2.65 m	6.0 m	kg	*6710	5440	*6760	5450	*8130	7700						
	4.5 m	kg	*6740	4730	*8160	5370	*9070	7430	*11010	*11010				
	3.0 m	kg	*7020	4380	8480	5220	*10310	7090	*13720	10500				
	1.5 m	kg	6910	4260	8300	5060	*11420	6780	*15700	9910				
	0.0 m	kg	7090	4340	8180	4950	11290	6580	*16310	9670				
	-1.5 m	kg	7710	4680	8140	4920	11210	6520	*15900	9640	*12990	*12990		
	-3.0 m	kg	9150	5490			*11110	6570	*14550	9750	*19420	18810		
	-4.5 m	kg												
 2.0 m	6.0 m	kg	*7550	6130			*8980	7590	*10070	*10070				
	4.5 m	kg	*7520	5230	8590	5320	*9820	7350	*12300	11060				
	3.0 m	kg	7770	4810	8460	5210	*10960	7040	*14990	10280				
	1.5 m	kg	7600	4680	8320	5090	11510	6780						
	0.0 m	kg	7860	4810	8240	5010	11340	6640	*16290	9760				
	-1.5 m	kg	8700	5270			11330	6630	*15430	9810	*12500	*12500		
	-3.0 m	kg	*9650	6400			*10320	6750						
	-4.5 m	kg												

* Load is limited by hydraulic capacity rather than tipping. Ratings are based on SAE Standard No. J1097.

Rated loads do not exceed 87% of hydraulic lift capacity or 75% of tipping load. Lifting capacity stated is based on lifting with bare arm.

When lifting with additional equipment installed to the arm, please subtract the weight of all additional equipment from the values stated.



A – Reach from swing center

B – Bucket hook height

C – Lifting capacities

– Rating over front

– Rating over side

– Rating at maximum reach

Weights:

With 2.0 and 2.65 m arm:
bucket linkage and
bucket cylinder: 390 kg
With 3.2 and 3.5 m arm:
bucket linkage and
bucket cylinder: 363 kg

PC290NLC-11 Two-piece boom

With 700 mm shoes

Arm length	A				9.0 m		7.5 m		6.0 m		4.5 m		3.0 m	
	B													
 3.5 m	7.5 m	kg	*4350	*4350			*4650	*4650	*7000	*7000				
	6.0 m	kg	*4100	*4100			*6850	5600	*7400	*7400				
	4.5 m	kg	*4000	*4000	*3300	4100	*7950	5500	*8750	7650	*9000	*9000		
	3.0 m	kg	*4050	3850	*4700	4050	*8600	5300	*10250	7300	*13300	10250		
	1.5 m	kg	*4250	3750	5000	3950	8400	5100	*11200	6900	*14500	10100		
	0.0 m	kg	*4550	3800	*4850	3900	8150	4950	11550	6650	*15450	9800		
	-1.5 m	kg	*5100	4100			7950	4900	11100	6500	*14400	8750		
	-3.0 m	kg							*10350	6550				
	 3.2 m	7.5 m	kg	*4750	*4750					*7550	*7550			
6.0 m		kg	*4450	*4450			*7100	5500	*8100	7850	*7650	*7650		
4.5 m		kg	*4350	4250			*8350	5450	*9500	7600	*10650	*10650		
3.0 m		kg	*4400	4000		4000	8600	5250	*10550	7200	*13750	10100		
1.5 m		kg	*4550	3900		3950	8350	5100	*11400	6850	*14800	10050		
0.0 m		kg	*4950	4000			8150	4950	11500	6650	*15550	9800		
-1.5 m		kg	*5550	4250			7950	4900	11100	6550	*13700	8800		
-3.0 m		kg												
 2.65 m		7.5 m	kg	*7150	6800					*9250	7800	*9800	*9800	
	6.0 m	kg	*6650	5400			*7050	5450	*9350	7750	*10200	*9500		
	4.5 m	kg	*6500	4700			8800	5400	*10050	7500	*12450	10700		
	3.0 m	kg	*6650	4350			8600	5200	*11000	7150	*14600	10500		
	1.5 m	kg	*6950	4250			8500	5100	11700	6850				
	0.0 m	kg	7250	4400			8450	5000	11550	6650	*15450	9800		
	-1.5 m	kg					8650	5000	*11100	6650	*13700	8900		
	-3.0 m	kg												
	 2.0 m	7.5 m	kg	*8200	8150							*11100	*10300	
6.0 m		kg	*7450	6100					*10050	7600	*11750	*10950		
4.5 m		kg	*7200	5200			*8550	5300	*10650	7350	*13500	10400		
3.0 m		kg	*7300	4800			8600	5200	*11500	7050				
1.5 m		kg	*7650	4700			8450	5100	11650	6800				
0.0 m		kg	8050	4850			8400	5050	11600	6700	*15050	9900		
-1.5 m		kg							*10600	6750				
-3.0 m		kg												

* Load is limited by hydraulic capacity rather than tipping. Ratings are based on SAE Standard No. J1097.

Rated loads do not exceed 87% of hydraulic lift capacity or 75% of tipping load. Lifting capacity stated is based on lifting with bare arm. When lifting with additional equipment installed to the arm, please subtract the weight of all additional equipment from the values stated.

Standard and optional equipment

Engine

Komatsu SAA6D107E-3 turbocharged common rail direct injection diesel engine	●
EU Stage V compliant	●
Suction type cooling fan with radiator fly screen	●
Automatic engine warm-up system	●
Engine overheat prevention system	●
Fuel control dial	●
Auto-deceleration function	●
Adjustable idle shutdown	●
Engine key stop	●
Engine ignition can be password secured on request	●
Alternator 24 V / 90 A	●
Starter motor 24 V / 5.5 kW	●
Batteries 2 × 12 V / 180 Ah	●

Hydraulic system

Electronic closed-centre load sensing (E-CLSS) hydraulic system (HydraMind)	●
Pump and engine mutual control (PEMC) system	●
6-working mode selection system; Power mode, Economy mode, Breaker mode, Attachment Power and Attachment Economy mode, and Lifting/Fine Operation mode	●
PowerMax function	●
PPC wrist control levers for arm, boom, bucket and swing, with sliding proportional control for attachments and 3 auxiliary buttons	●
Prepared for hydraulic quick-coupler	●
Additional hydraulic functions	○
Komatsu Integrated Attachment Control (KIAC)	○

Undercarriage

Track roller guards	●
Track frame under-guards	●
600, 700, 800, 850 mm triple grouser shoes	○
Full length track roller guards	○

Drives and brakes

Hydrostatic, 3-speed travel system with automatic shift and planetary gear type final drives, and hydraulic travel and parking brakes	●
PPC control levers and pedals for steering and travel	●

Cabin

Reinforced safety SpaceCab™; highly pressurised and tightly sealed hyper viscous mounted cab with tinted safety glass windows, large roof window with sun shade, pull-up type front window with locking device, removable lower window, front window wiper with intermittent feature, sun roller blind, cigarette lighter, ashtray, luggage shelf, floor mat	●
Heated, high-back air-suspended seat with lumbar support, console mounted height adjustable arm rests, and retractable seat belt	●
Automatic climate control system	●
12/24 Volt power supplies	●
Beverage holder and magazine rack	●
Hot and cool box	●
Radio (AM/FM)	●
Auxiliary input (MP3 jack)	●
Lower wiper	○
Rain visor (not with OPG)	○
DAB+ digital radio w. auxiliary input (MP3 jack)	○

Service and maintenance

Automatic fuel line de-aeration	●
Double element type air cleaner with dust indicator and auto dust evacuator	●
Komtrax – Komatsu wireless monitoring system (4G)	●
Komatsu Care – a maintenance program for Komatsu customers	●
Multifunction video compatible colour monitor with Equipment Management and Monitoring System (EMMS) and efficiency guidance	●
Toolkit	●
Service points	○
Automatic greasing system	○

LED lighting system

Working lights: 2 revolving frame, 1 boom (l.h.)	●
Additional working lights (#1): 2 cab roof (front), 1 cab roof (rear), 1 boom (r.h.), 1 counterweight, beacon	○
Additional working lights (#2): 4 cab roof (front), 1 cab roof (rear), 1 boom (r.h.), 1 counterweight, 2 boom cylinders, 2 revolving frame (l.h. + r.h.), beacon	○

Safety equipment

KomVision surround view system	●
Electric horn	●
Overload warning device	●
Audible travel alarm	●
Boom safety valves	●
Large handrails, rear-view mirrors	●
Battery main switch	●
ROPS compliant to ISO 12117-2:2008	●
Emergency engine stop switch	●
Seat belt caution indicator	●
Neutral position detection system	●
Arm safety valve	●
OPG Level II front guard (FOPS), hinged type	○
OPG Level II top guard (FOPS)	○

Work equipment

Mono boom	○
Two-piece boom	○
Bucket linkage with lifting eye	○
2.0 m; 2.65 m; 3.2 m; 3.5 m arms	○
Komatsu buckets	○
Komatsu breakers	○

Other equipment

Standard counterweight	●
Remote greasing for swing circle and pins	●
Electric refuelling pump with automatic shut-off function	●
Biodegradable oil for hydraulic system	○
Customised paint	○

Further equipment on request

- standard equipment
- optional equipment



A wide range of buckets and attachments is available. Your Komatsu distributor is ready to assist you with the selection of suitable options.

This specification sheet may contain attachments and optional equipment that are not available in your area. Please consult your local Komatsu distributor for those items you may require. Materials and specifications are subject to change without notice.

Your Komatsu partner:

KOMATSU

[komatsu.eu](https://www.komatsu.eu)

